

Types of RCFE's

Residential Care Facilities for the Elderly (RCFE) come in wide variety of sizes, styles, and prices. They are often categorized into the following **five (5) categories**, each with its own pros and cons:



Independent Living Communities:

- Ideal for active and independent seniors who require minimal assistance.
- Offer private apartments or cottages with amenities like kitchens, laundry facilities, and social spaces.
- Residents manage their own daily activities, but some communities may offer meal plans and housekeeping services.



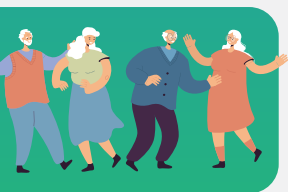
Assisted Living Facilities:

- Suitable for seniors who need some help but still want to maintain a degree of independence.
- Provide assistance with daily living activities like bathing, dressing, and medication management.
- Offer 24/7 supervision and emergency response.
- May have shared or private accommodations, with meals, housekeeping, and laundry services typically included.



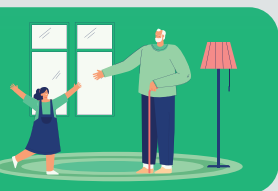
Memory Care Facilities:

- Designed specifically for individuals with dementia or Alzheimer's disease.
- Offer secure environments with specialized staff trained to manage cognitive decline and behavioral changes.
- Provide structured activities and routines to support cognitive function and emotional well-being.



Continuing Care Retirement Communities (CCRCs):

- Offer a continuum of care, from independent living to assisted living and skilled nursing care, on one campus.
- Residents pay an entrance fee and monthly maintenance fee, which covers housing, meals, and care as needed.
- Provide peace of mind knowing future care needs can be met within the same community.



Board and Care Homes:

- Typically a residential home geared to support a small number of residents (4-6).
- Provide room and board, meals, supervision, and various levels of care.
- Often offers a more affordable and intimate home-like setting compared to larger assisted living communities.

Choosing the right residential care facility depends on the individual's needs and preferences. Some factors to consider include the level of care needed, the cost, the amenities and activities offered, and the location.



Contact Us!
(877) 707-9111
info@apexcare.com
www.apexcare.com